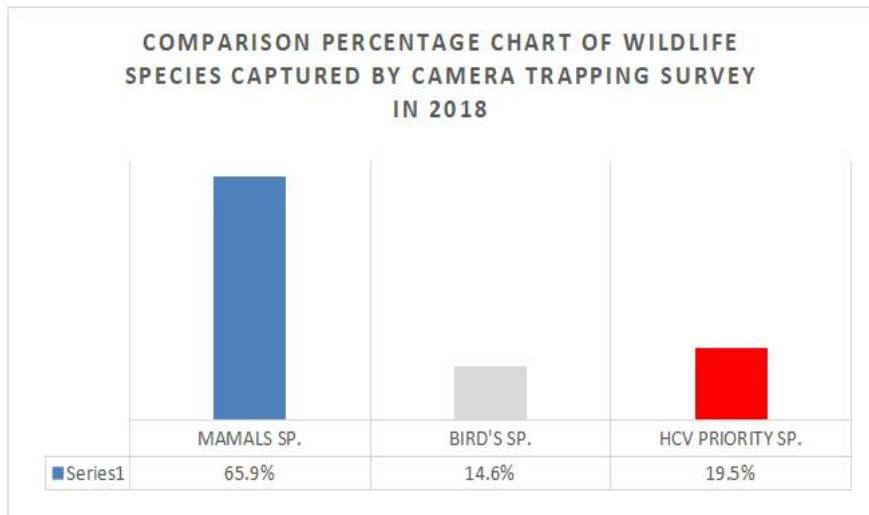
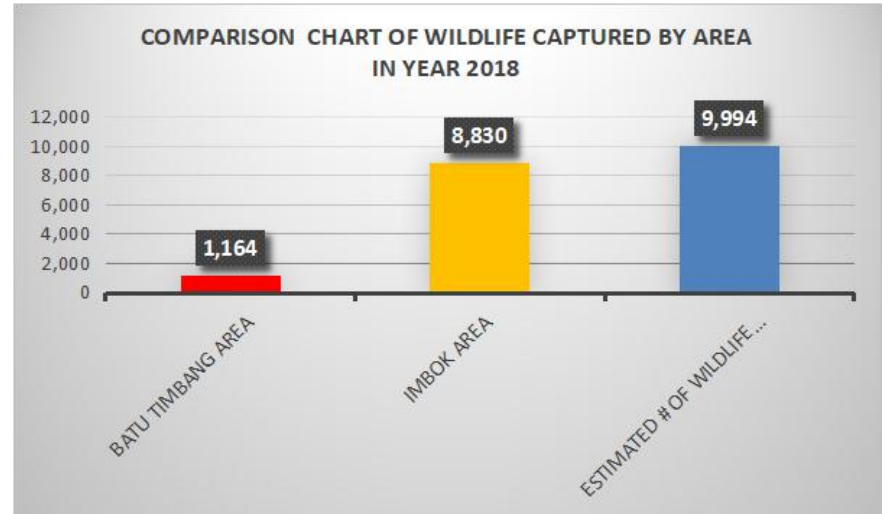
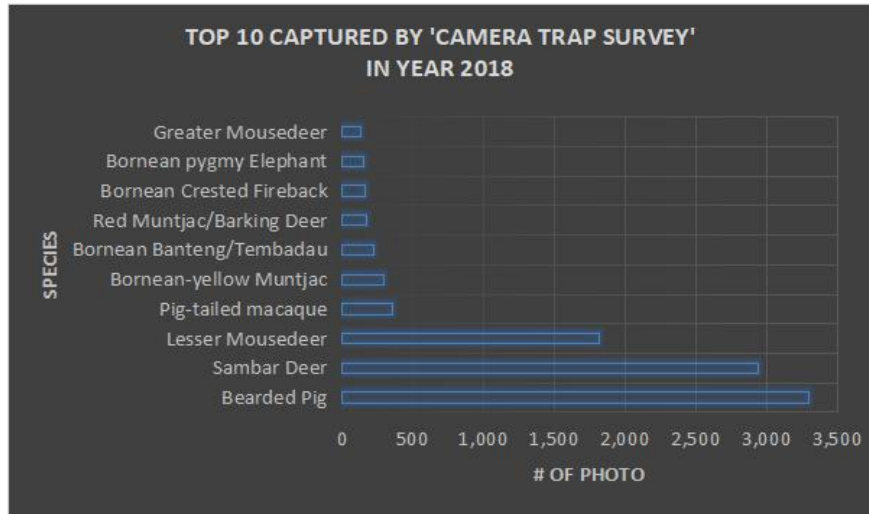


Camera Trapping (Camera-Traps Placed In Strategic Locations)

Table 1. List of Camera Traps Installed and the number of recorded Pictures in 2018

No	SCIENTIFIC NAME	SPECIES	BATU TIMBANG AREA	IMBOK AREA	ESTIMATED # OF WILDLIFE SIGHTING	DAY AVR.	IND. /DAY	%
1	<i>Manouria emys</i>	Asian Giant Tortoise	0	4	4	62	0.0006	0.04%
2	<i>Hemigalus derbyanus</i>	Banded Civet	5	4	9	62	0.0015	0.09%
3	<i>Sus barbatus</i>	Bearded Pig	399	2,898	3,297	62	0.5318	32.99%
4	<i>Arctictis binturong</i>	Binturong	2	0	2	62	0.0003	0.02%
5	<i>Bos javanicus</i>	Bornean Banteng/Tembadau	1	223	224	62	0.0361	2.24%
6	<i>Lophura ignita</i>	Bornean Crested Fireback	2	163	165	62	0.0266	1.65%
7	<i>Arborophila graydoni</i>	Bornean Necklaced Partridge	0	4	4	62	0.0006	0.04%
8	<i>Pongo pygmaeus mario</i>	Bornean Orang-utan	0	22	22	62	0.0035	0.22%
9	<i>Elephas maximus borneensis</i>	Bornean pygmy Elephant	12	134	146	62	0.0235	1.46%
10	<i>Arctogalidia stigmatica</i>	Bornean Striped Palm Civet	0	3	3	62	0.0005	0.03%
11	<i>Helarctos malayanus</i>	Bornean Sun Bear	3	20	23	62	0.0037	0.23%
12	<i>Muntiacus atherodes</i>	Bornean-yellow Muntjac	0	297	297	62	0.0479	2.97%
13	<i>Prionailurus planiceps</i>	Flat-Headed Cat	1	0	1	62	0.0002	0.01%
14	<i>Lariscus hosei</i>	Four-striped Ground Squirrel	0	4	4	62	0.0006	0.04%
15	<i>Argusianus argus</i>	Great Argus	8	3	11	62	0.0018	0.11%
16	<i>Centropus sinensis</i>	Greater Coucal	0	16	16	62	0.0026	0.16%
17	<i>Tragulus napu</i>	Greater Mousedeer	90	44	134	62	0.0216	1.34%
18	<i>Paradoxurus philippinensis</i>	Island Palm Civet/Common Palm	1	12	13	62	0.0021	0.13%
19	<i>Prionailurus bengalensis</i>	Leopard Cat	0	52	52	62	0.0084	0.52%
20	<i>Tragulus kanchil</i>	Lesser Mousedeer	0	1,817	1,817	62	0.2931	18.18%
21	<i>Macaca fascicularis</i>	Long-tailed Macaque	12	3	15	62	0.0024	0.15%
22	<i>Trichys fasciculata</i>	Long-tailed Porcupine	4	3	7	62	0.0011	0.07%
23	<i>Viverra zangalunga</i>	Malay Civet	19	72	91	62	0.0147	0.91%
24	<i>Hystrix brachyura</i>	Malayan/Common Porcupine	27	98	125	62	0.0202	1.25%
25	<i>Pardofelis marmorata</i>	Marbled Cat	0	3	3	62	0.0005	0.03%
26	<i>Macaca nemestrina</i>	Pig-tailed macaque	82	272	354	62	0.0571	3.54%
27	<i>Galus-galus</i>	Red Junglefowl	0	4	4	62	0.0006	0.04%
28	<i>Muntiacus muntjac</i>	Red Muntjac/Barking Deer	68	99	167	62	0.0269	1.67%
29	<i>Cervus unicolor</i>	Sambar Deer	425	2,508	2,933	62	0.4731	29.35%
30	<i>Urva brachyurus</i>	Short-tailed Mongoose	2	35	37	62	0.0060	0.37%
31	<i>Copsychus stricklandi</i>	White-crowned Shama	0	3	3	62	0.0005	0.03%
32	<i>Varanus salvator</i>	Water Monitor	1	0	1	62	0.0002	0.01%
33	<i>Msrtes flavigula</i>	Yellow-throated Marten	0	10	10	62	0.0016	0.10%
TOTAL :			1,164	8,830	9,994	62	1.61	100%

Figure 1. Graph and Wildlife Chart using the 'CAMERA TRAP SURVEY' Method in 2018



Data analysis from our camera traps recorded that the *Bearded Pig* (3,297 pictures), *Sambar Deer* (2,933 pictures) and *Lesser Mousedeer* (1,817 pictures) are three of the highest presence detected from our camera traps. From all of the wildlife presence detected and recorded, eight HCV 'Priority' species were present which is the *Bornean Elephant*, *Bornean Orang-utan*, *Sambar Deer*, *Bearded Pig*, *Marbled Cat*, *Flat Headed Cat*, *Tambadau* and *Sun Bear*. Camera traps were placed in 18 locations and recorded 9,994 pictures in 2018. The data in 4th Quarter recorded the highest number of picture with a total of 5,896 which consists of 20 wildlife species.